
 NOIR(E) 1 TEMPS
 ↓
 BLAN - CHE 2 TEMPS
 ↓ ↓



1 


2 

3 

4 

-1-

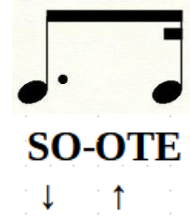
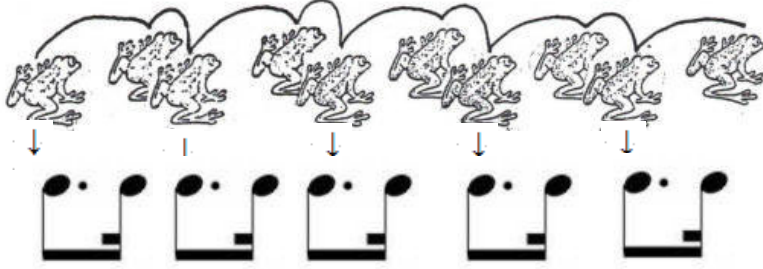
 BLAN - CHE POINT
 ↓ ↓ ↓
 3 TEMPS


1 

2 

3 

-2-



1 TEMPS = 

1 

2 

3 

-15-

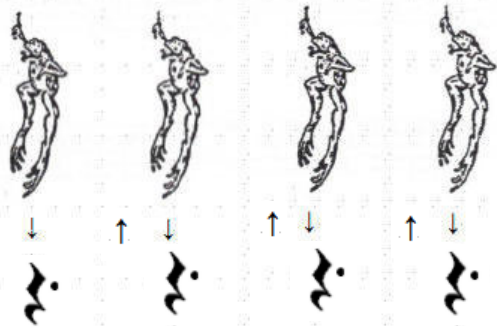
JE MÉLANGE TOUS LES RYTHMES APPRIS

1 

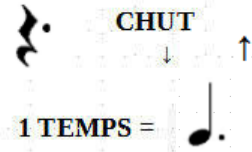
2 

3 

-16-



LE SOUPIR POINTÉ



1

2

-23-

LA DEMIE-PAUSE POINTÉE



Elle vaut autant que la blanche pointée

- 2 temps dans les mesures ternaires 6/8 , 9/8 , 12/8
- 3 temps dans les mesures binaires 2/4 , 3/4 , 4/4

1

2

3

4

-24-